

AP625

5GHz 433Mbps Outdoor Point to Point CPE

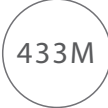
AP625

5GHz 433Mbps Outdoor Point to Point CPE

Product Introduction

AP625 5GHz 433Mbps outdoor Point to Point CPE is designed to WISP CPE solutions and long distance wireless network solutions for video surveillance and data transmission. It features with an external power amplifier and a built-in 16dBi directional antenna to provide an efficient way to pick up and maintains a stable signal for a wireless network connection range up to 10 kilometers.



-  433M
-  5GHz 11AC
-  IP64 Waterproof Enclosure
-  WISP
-  WISP Mode
-  16dBi Directional Antenna
-  6kV Lightning Protection
-  PoE
-  60m PoE Injector Power Supply
-  Station Mode

Key Features

- 5GHz 11AC 433Mbps
- IP64 waterproof enclosure
- 16dbi directional antenna
- AP, Station, WISP etc operating mode supported
- Up to 60 meters of flexible deployment with included PoE Injector

Product Features

5GHz 11AC 433Mbps

AP625 adopts of 11AC technology and gigabit ethernet port to boost the throughput performance on the wireless connection.

10km+ Wireless Data Transmission

AP625 is specially designed for outdoor long range point to point application scenarios. Adopt of external power amplifier and 16dBi antenna to achieve 10km+ wireless data transmission range.

Bridge two device at a push of button

AP625 comes with an operating mode switch, you can switch the device to work as AP mode or Station mode without login to web UI. When one works as AP mode and another works as Station(Client) mode, you can bridge two devices together at a push of Bridge/RST button.

Smart Signal Indicator LED

3 signal LED Lights represent the currently signal strength that AP625 receives from peer device. It is helpful to find the right location to deploy the device and achieve a better performance.

Advanced Antenna System

AP625 adopts of specific antenna array and metal reflector to deliver higher gain and optimized transmission quality.

Professional Outdoor Design

Equipped with IP64 waterproof enclosure and 6kv lightning protection capability, AP625 can work in various weather conditions, such as sunshine, rainfall, wind, snow or extremely low/high temperature environment devices together at a push of Bridge/RST button.

Multiple Application Scenarios

Long-Distance Wireless Connection

One work as AP mode and another work as Station mode to create a long distance wireless connection for video surveillance and data transmission.

WISP(Client+Router) Mode

Wirelessly connect to WISP station/hotspot to share Internet to local wireless and wired network.

P2MP Link

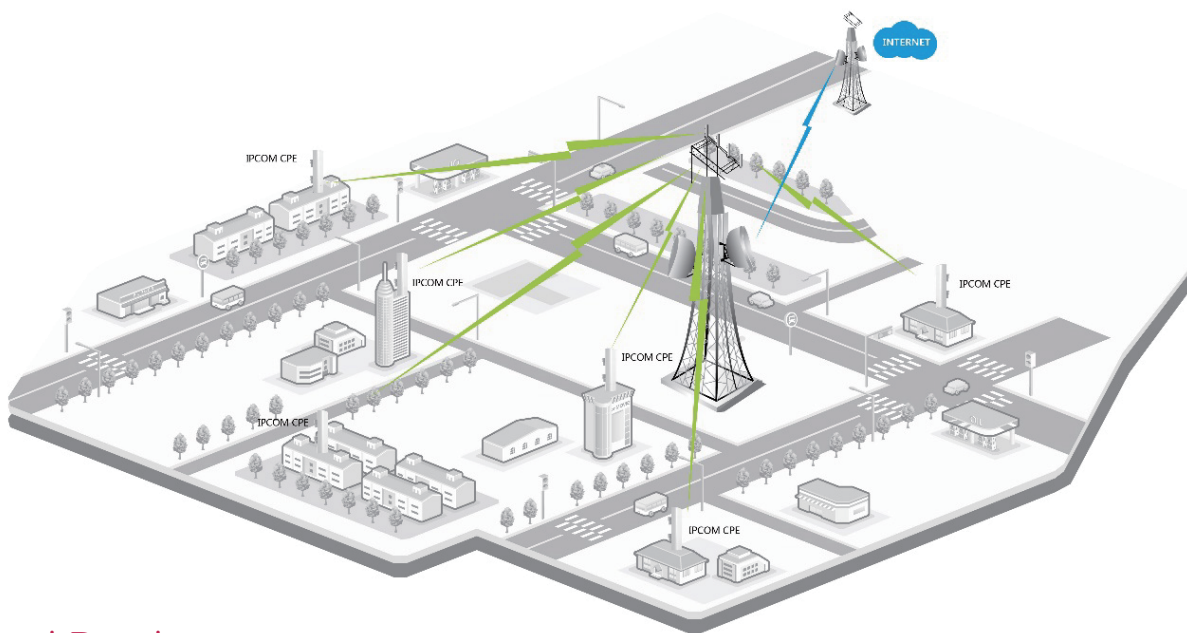
Link multi AP in a network, all the associated client can communicate with each other.

Product Features

Easy to Manage

AP625 comes with a centralized management software that helps users easily to manage all the devices in the network from a single PC-CPE Controller.

Application Scenarios



Related Products



AP515

- 2.4GHz 300Mbps
- IP64 waterproof enclosure
- 7dbi directional antenna
- Compliant with PoE 802.3at
- Centralized managed by AC2000/AC3000/SE3100



AP365

- 11AC dual band 1750Mbps
- Aesthetic ceiling design
- Compliant with PoE 802.3at
- Two Gigabit Ethernet Port
- Tagging VLAN ID for multi SSID
- 5GHz band steering
- Centralized management by AC2000/AC3000



AC2000

- Easy to configure, manage and monitor Aps
- Maximum AP managed number up to 512
- Remote manage multi branch AP and AC
- Built-in captive portal server and customized welcome page
- Access device type and customer behavior statistic



GW735

- Maximum user capacity up to 300
- Smart QoS Bandwidth Management
- Multi WAN load balance and bandwidth combination
- PPTP,L2TP,Ipsec VPN server and client supported
- Integrated with AP controller feature to manage 32 IP-COM AP
- Built-in captive portal server to push AD and customized user connection time

Product Specifications

Product Information	
Model	AP625
Dimensions	270*94.86*67.5mm
Deployment	Hole Mount
Application Scenarios	Long range video surveillance,data transmission and WISP CPE
Hardware Specifications	
Frequency Range	5GHz
Maximum wireless speed	433Mbps
CPU Processor	Broadcom 900MHz
GND Terminal	1
Interface	1*GE PoE/WAN/LAN port
Mode Switch	STA: The device only work in Station mode Off: The device work on AP/Station/Universal Repeater/WISP/Router mode AP: The device only work in AP mode
Button	Reset: Press 15 seconds or more to restore to default settings Bridge: Press 3-7 seconds and release it to bridge uplink AP
Antennas	16dbi Directional Antenna
Antenna Beamwidth	Horizontal: 30° Vertical: 15°
Maximum Power Consumption	9W
Lightning Protection	6KV
Waterproof Level	IP64
LED indicator	LAN,LED1,LED2,LED3
Power Supply	24v 0.5A PoE Injector
Software Features	
Operating mode	AP/Station/Universal Repeater/WISP/Router
Compliant Standards	IEEE 802.11ac/n/a
Wireless Features	Enable/Disable Wireless Radio SSID Hidden Wireless Client isolation Sensitivity Threshold WMM Capable APSD Capable Wireless Access Control Wireless Client list
Wireless Security	64/128 WEP,WPA-PSK,WPA2-PSK,WPA&WPA2-PSK,WPA,WPA2
Transmission Power	Adjustable power by 1dBm

Product Specification

Software Features

Receiver sensitivity	MCS0: -90dbm MCS7: -72dbm
DHCP Server	DHCP Server&Clients list
VPN Pass-Through	PPTP,L2TP
Remote Web access	Support
Schedule Reboot	Support
Page Timeout	Support
Ping Watchdog	Support
Speed Test	Support
Dyndns	noip, dyndns.org
Network Diagnoses	Ping, Traceroute, Signal Scan
	Time&Date Setting
	System Log
Management Tool	Firmware update
	Backup/Restore Configuration
	Username Management
Managed By Controller	PC Software -- CPE Controller

Others

	5GHz 433Mbps outdoor Point to Point CPE AP625
	Power Adapter
Package Contents	Ethernet cable
	Two Plastic Staps
	Quick Installation Guide
Operating Temperature	-20℃ - 55℃
Storage Temperature	-40℃ - 70℃
Operating Humidity	10%-90% non-condensing
Storage Humidity	10%-90% non-condensing
Default login IP	192.168.2.1
Default Login Username	admin
Default Login Password	admin
Certifications	FCC/CE/RoHS

IP-COM
World Wide Wireless

IP-COM NETWORKS CO.,LTD.

Tower E3, No.1001, Zhongshanyuan Road,
Nanshan District, Shenzhen, China. 518052
Service: info@ip-com.com.cn
Inquiry: marketing@ip-com.com.cn
Tel: +86-755-27653089