

Quick Installation Guide

EWS330AP
version 1.0

Ceiling Mount Design
Wireless Managed Indoor Access Point

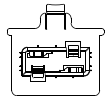
Package Contents



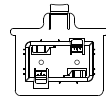
Access Point (EWS330AP)



Quick Installation Guide



Ceiling Mount Base
(9/16" T-Rail)



Ceiling Mount Base
(15/16" T-Rail)



Power Adapter



Mounting kit

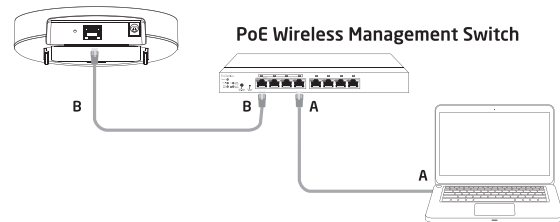
Minimum Requirements

- + Broadband Internet Service
(Cable or DSL Modem)
- + Internet Browser
(Internet Explorer, Safari, Firefox, Chrome, Edge)
- + EnGenius Wireless Management L2 Switch
(To use with EWS Series Management Switches)

Managed Access Point Installation with Wireless Management Switch

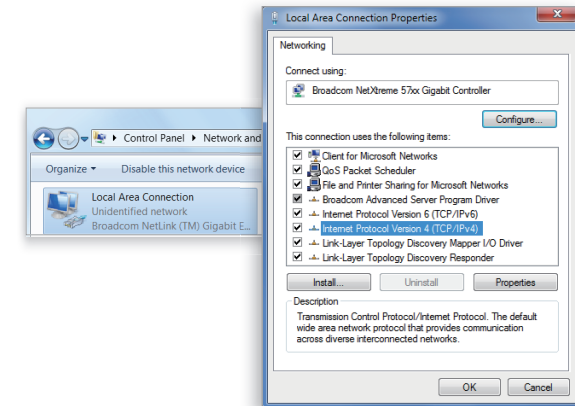
1 Connecting the Access Point (Through EnGenius Wireless Management Switch)

- A) Connect one end of the **Ethernet Cable** into an **Ethernet Port** on the front panel of the EnGenius Wireless Management Switch and the other end to the Ethernet Port on the computer.
- B) Connect another **Ethernet Cable** into the **LAN Port** of the Managed AP and the other end to the **Ethernet Port** on the Wireless Management Switch. With the Wireless Management Switches, the Managed AP is able to obtain a proper assigned IP address for further configurations.



2 IP Address Configuration

- A) Once your computer is on, ensure that your TCP/IP is set to **On** or **Enabled**. Open Network Connections and then click **Local Area Connection**. Select **Internet Protocol Version 4 (TCP/IPv4)**.



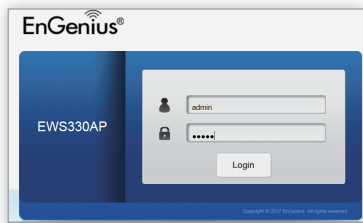
- B) If your computer is already on a network, ensure that you have set it to a Static IP Address on the interface. (Example: 192.168.0.88 and the Subnet Mask address as 255.255.255.0.)

3 Management Switch Setup

- A) Open a web browser on your computer. In the address bar of the web browser, enter **192.168.0.239** and **enter**.



- B) A login screen will appear. By default, username is **admin** and the password is **password**. Enter the current username and password of the Wireless Management Switch and then click **Login**.



* Your mode number may be different in the web browser interface.

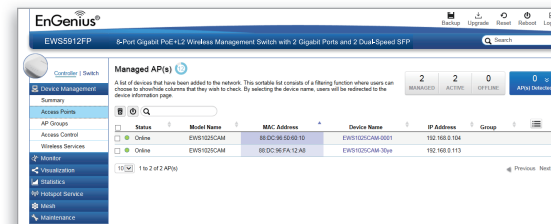
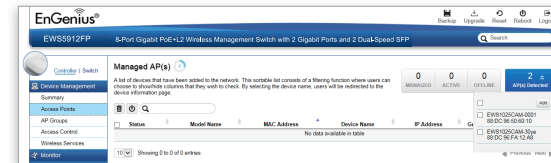
- C) The EnGenius Wireless Management Switch User Interface will appear. Make sure the **Controller State** is set to **Enabled**.



4 Adding Managed AP

(Through EnGenius Wireless Management Switch GUI)

- A) All Managed AP(s) connected to the same network as the Wireless Management Switch will appear on the right side of the screen, under **Detected** list. Locate and select the Managed AP by checking the box and click **Add** to manage the device.



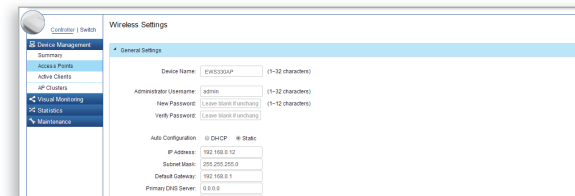
- B) You may configure your Managed AP(s) after you successfully connect to the Wireless Management Switch through its **GUI**.

5 Configuring Managed AP

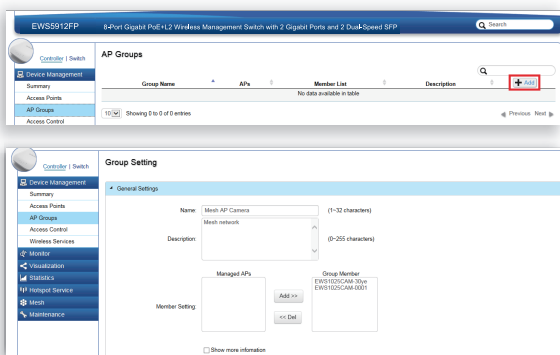
(Through EnGenius Wireless Management Switch GUI)

- A) Configure Managed AP(s) through the GUI interface from the switch for WLAN settings under **Device Management**. Click the "Device Name" in order to configure your Managed AP..

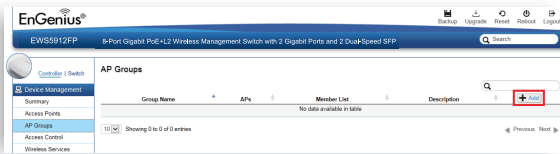
Status	Model Name	MAC Address	Device Name	IP Address	Group
Online	EWS1025CAM	88 DC 96 50 60 10	EWS1025CAM-0001	192.168.0.104	
Online	EWS1025CAM	88 DC 96 FA 12 A8	EWS1025CAM-30ye	192.168.0.113	



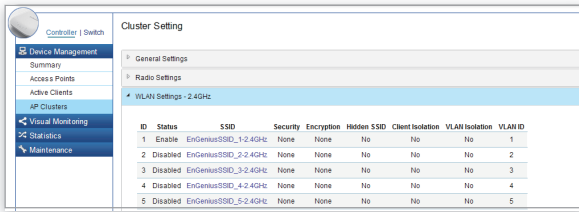
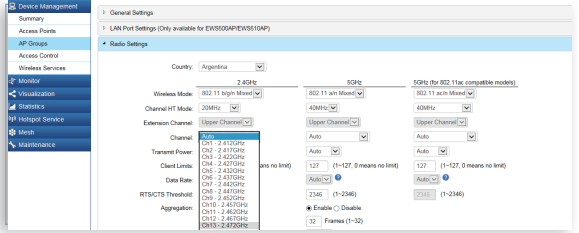
- B) Add Managed AP(s) to a specific **AP Group** to save repetitive configuration tasks.



C) Users may create several groups simultaneously to accommodate their deployments under **AP Groups**.



D) For distinct settings, EnGenius Wireless Management switches still offer individual Managed Access Point customization for cluster members such as different channels that best adapt your local WLAN deployments.



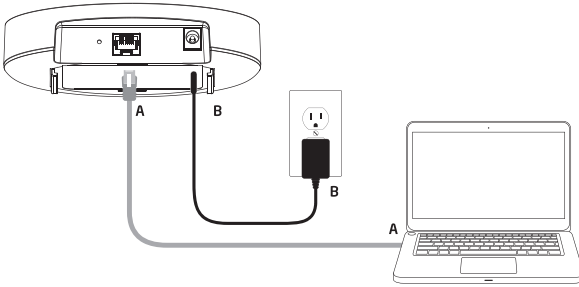
E) Upon successful connection and setup, user can review sections of the web management pages and unleash more features for WLAN deployment and performance monitoring.

Stand-alone Access Point Installation

1 Connecting the Access Point

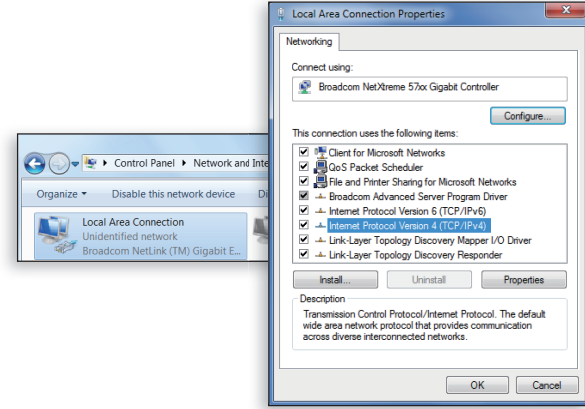
- A) Connect one end of the **Ethernet** cable into the **Ethernet** port of the Access Point and the other end to the **Ethernet** port on the computer.
- B) Connect the **Power Adapter** to the DC-IN port of the Access Point and plug the other end into an electrical outlet.

Note: The Access Point supports both **IEEE 802.3af** PoE (Power over Ethernet) or the included power adapter. You may use either one as the power source. **DO NOT** use both at the same time.

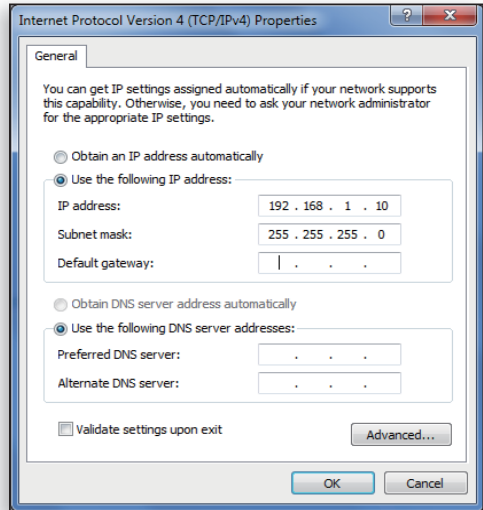


2 IP Address Configuration

- A) Once your computer is on, ensure that your TCP/IP is set to **On** or **Enabled**. Open **Network Connectons** and then click Local Area Connecton. Select **Internet Protocol Version 4 (TCP/IPv4)**.

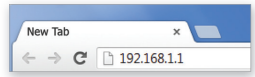


- B) If your PC is already on network, ensure that you have set it to a static IP Address on the interface. (Example: 192.168.1.10 and the Subnet Mask address as 255.255.255.0).

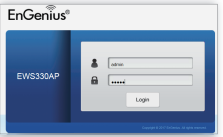


3 Access Point Setup

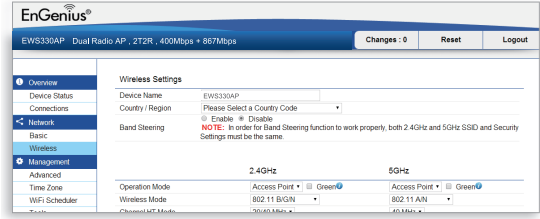
- A) Open a web browser on your computer. In the address bar of the web browser, enter **192.168.1.1** and **enter**.



- B) A login screen will appear. By default, the username of the Access Point is **admin** and the password is **admin**. Enter the current username and password of the Access Point and then click **Login**.



- C) The EnGenius Access Point User Interface will appear. This device can operate in Access Point operating mode.

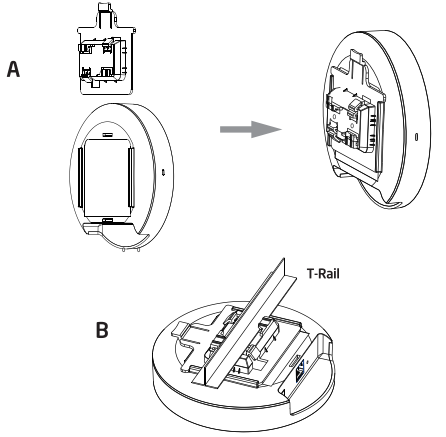


* Your model number may be different in the web browser interface.

4 Mounting the Access Point

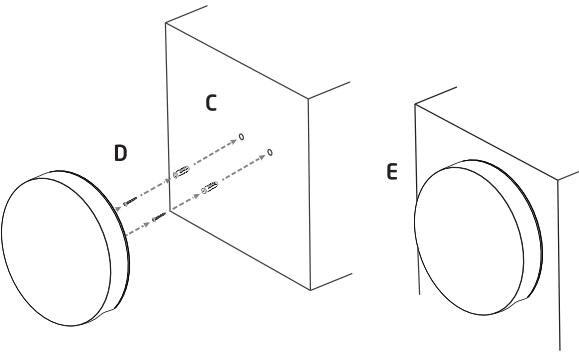
Ceiling Mounting the Access Point :

- A) Slide the ceiling mount base into the slot of the Access Point.
- B) Hold the Access Point with one hand to reach the other hand over the T-Rail sides of the bracket. Then hook the stationary end of the ceiling mount bracket onto the T-Rail.



Wall Mounting the Access Point :

- C) Continued from A, determine where the Access Point to be placed and mark location on the surface for the two mounting holes. Use the appropriate drill bit to drill two 8.1mm diameter and 26mm depth holes in the markings and hammer the bolts into the openings.
- D) Screw the anchors unto the holes until they are flush with the wall ; screw the included screws into the anchors.
- E) Place the Access Point against wall with the mounting screw heads.



Technical Support

Country of Purchase	Service Center	Service Information
North America www.engeniustech.com	Canada	rma@engeniustech.com Toll Free: 888-397-2788 Local: (+1) 905-940-8181
	Los Angeles, USA	support@engeniustech.com Toll Free: 885-735-7888 Local: (+1) 714-432-8668
Europe www.engeniusnetworks.eu	Netherlands	support@engeniusnetworks.eu Local: (+31) 40-8200-887
Africa / Middle East www.engenius-me.com	Dubai, UAE	support@engenius-me.com Local: (+971) 4-357-5599
Asia / Oceania www.engeniustech.com.sg	Singapore	techsupport@engeniustech.com.sg Local: (+65) 6227-1088
Taiwan www.engeniustech.com.tw	Taiwan, R.O.C.	twsupport@engeniusnetworks.com Toll Free: 0800-003-885 Local: (+886) 2-2652-1808

Notes

LED Definition	Power On	Green	Link : Solid Light	✓
	Ready to Config (No Internet)	Yellow	Link : Solid Light	✓
	Internet Connection	Blue	Link : Solid Light	✓
	Internet Disconnection	Red	Link : Solid Light	✓



Maximum data rates are based on the IEEE standards. Actual throughput and range may vary depending on many factors including environmental conditions, distance between devices, radio interference in the operating environment, and mix of devices in the network. Features and specifications subject to change without notice. This device complies with Part 15 of the FCC Rules. Operation is subject to the following two conditions: (1) this device may not cause harmful interference, and (2) this device must accept any interference received, including interference that may cause undesired operation. Trademarks and registered trademarks are the property of their respective owners. For United States of America: Copyright ©2017 EnGenius Technologies, Inc. All rights reserved.