

## SMC-EZ1016DT and SMC-EZ1024DT (With SMC Green Saving)

EZ Switch™ 10/100



### Product Overview

The EZ Switch™ 10/100 SMC-EZ1024DT and SMC-EZ1016DT are 24/16-port Fast Ethernet switches. The 10BASE-T/100BASE-TX ports deliver dedicated 10/100 Mbps links to each attached LAN segment – all with conventional cabling and adapters. Auto-negotiation is used to select the optimal communication mode for each connection. Auto-sensing is used to select the optimal transmission speed for each connection. With store-and-forward switching and flow control, maximum data integrity is always maintained, even under heavy loading. Easy installation and reliability make this plug-and-play switch an ideal choice for smooth Fast Ethernet integration.

### Key Features and Benefits

#### SMC Green Saving

SMC Green Saving Technologies are intelligent, innovative algorithms that detect link status and distance to best save power while maintain performance and stability.

- Power saving by Auto-Detection of the number of active ports
- Power saving by Cable length Auto-Detection

#### High Performance & Functionality

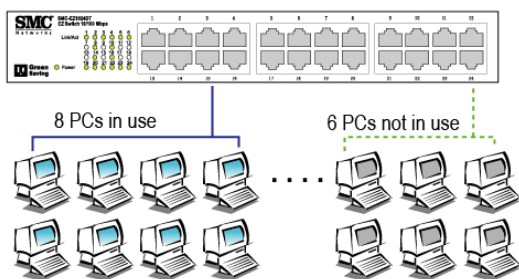
- Switching Fabric of 3.2 or 4.8 Gbps – non-blocking
- Filtering and forwarding at full wire speed on all ports
- Automatic address learning
- Buffered “store-and-forward” architecture prevents propagation of bad packets
- Half- and full-duplex flow control prevents packet loss under heavy loading

#### Easy to Install and Use

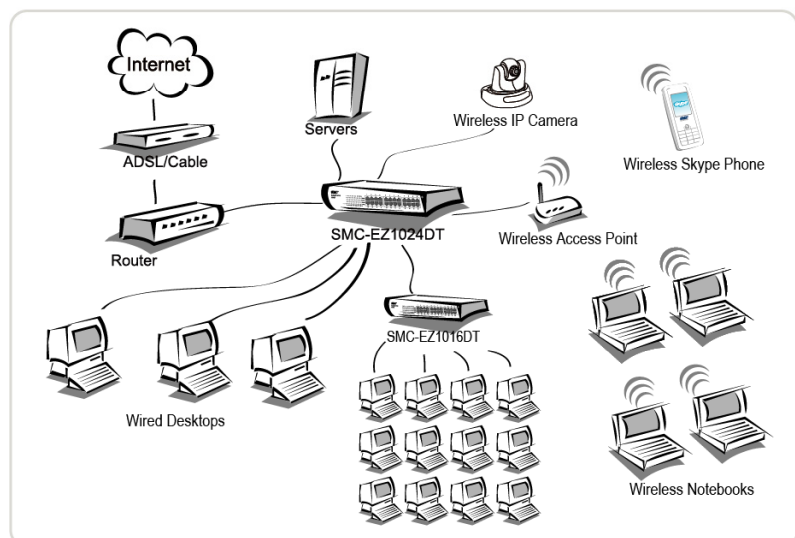
- Plug and Play nothing to configure
- Auto-Negotiation for automatic selection of speed and operating mode
- Comprehensive array of LEDs for “at-a-glance” monitoring of traffic on all segments
- Auto-MDIX ports eliminate concern over cabling and uplinks
- Desktop and rack mountable

#### Compatibility

- IEEE 802.3, 802.3u
- IEEE 802.3x full-duplex flow control



SMC Green Saving switches will auto-detect the link status and automatically cut off power for a given port during periods of no link (when a port is unconnected or a PC is turned off). After it detects an incoming signal, it wakes up from power saving mode and operates in normal mode.



SWITCHES

VDSL

WIRELESS

VOIP

STORAGE

BROADBAND

ADAPTERS

## Features

### Physical Ports

- SMC-EZ1016DT: 16 RJ-45 10/100 BASE-T ports
- SMC-EZ1024DT: 24 RJ-45 10/100 BASE-T ports

### Indicator Panel

- Power – One LED
- Ports: Link/Act – One LED per Port

### MAC Address Table

- 8 K entries

### Memory Buffer

- SMC-EZ1016DT: 160Kbytes
- SMC-EZ1024DT: 160Kbytes

### Power Consumption

- SMC-EZ1016DT: 6.831 Watts
- SMC-EZ1024DT: 8.514 Watts

### Power Requirement

- Input Voltage: 100 - 240 VAC@50-60 Hz

### Dimensions and Weight

- SMC-EZ1016DT: 21.6 x 13.3 x 4.2 cm (8.5 x 5.2 x 1.7 in)
- SMC-EZ1016DT: 870g (1.9 lbs)
- SMC-EZ1024DT: 26.7 x 16.1 x 4.2 cm (10.5 x 6.3 x 1.7 in)
- SMC-EZ1024DT: 1376g (3.0 lbs)

### Performance

- SMC-EZ1016DT
  - Switch Fabric : 3.2 Gbps (non-blocking)
  - Throughput : 2.4Mpps
- SMC-EZ1024DT
  - Switch Fabric : 4.8 Gbps (non-blocking)
  - Throughput : 3.6Mpps

### Regulatory Compliance

- EMC/Safety Compliances
- CE Mark
- Immunity
- EN 61000-4-2/3/4/5/6/8/11
- Emissions
- FCC Class A, CISPR Class A, EN 61000-3-2/3

### Environmental Specification

- Temperature: Operating: 0 ~ 40 °C / 32 ~ 104 °F
- Humidity: 10% to 90% non-condensing

### Warranty

- 3 Years

### Contact Information

SMC Networks Asia Pacific  
 1 Coleman Street #07-09  
 The Adelphi  
 Singapore 179803  
 Tel : +65 6338 7667  
 Fax : +65 6338 7767

Check [www.smc-asia.com](http://www.smc-asia.com) for your local country contact information

## Other Information

### System Requirements

- Computer with 10/100Mbps Network Adapter
- Ethernet cable (not included)

### Product Package Contents

- EZ Switch 10/100 (SMC-EZ1016DT or SMC-EZ1024DT)
- Four rubber foot pads
- Rack-mount bracket kit
- Appropriate AC power cord
- This User Manual
- SMC Warranty Registration Card
- Quick Installation Guide