



SuperRange CardBus

Quick Start Guide

Author: Michael Ford

Revision V1.0

Introduction:

This installation guide is intended to take you through the installation procedure for the Ubiquiti SuperRange CardBus adapter, and get you up and running right away.

Installation:

Insert the Installation CD, that came with the SRC card, into your system. This will Auto Run the installation. When the installation dialog pops up, please select Next to continue. See Figure 1.

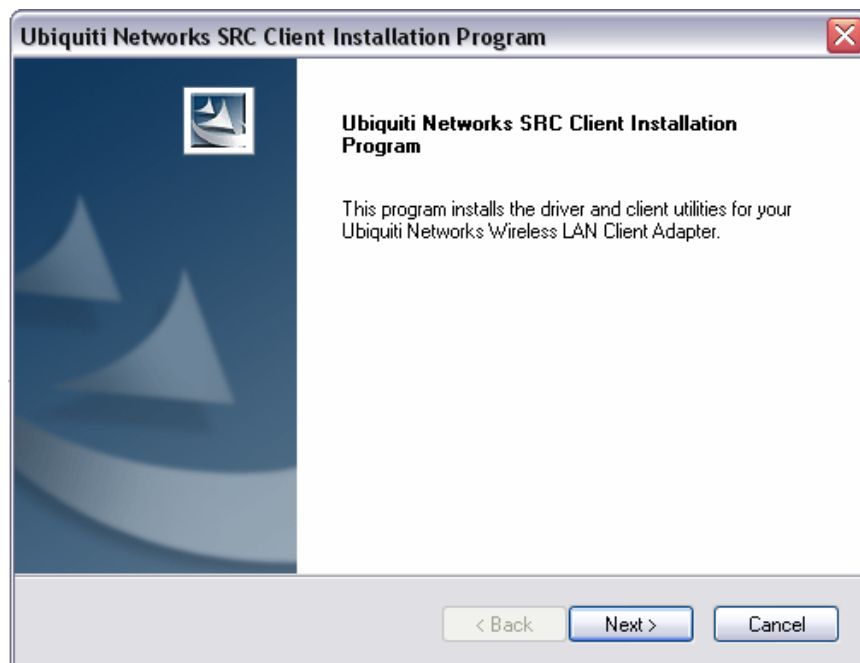


Figure 1.

Next you will see the Ubiquiti Networks License Agreement. To accept the license agreement, select the appropriate bullet and then click the next button. Please see Figure 2.

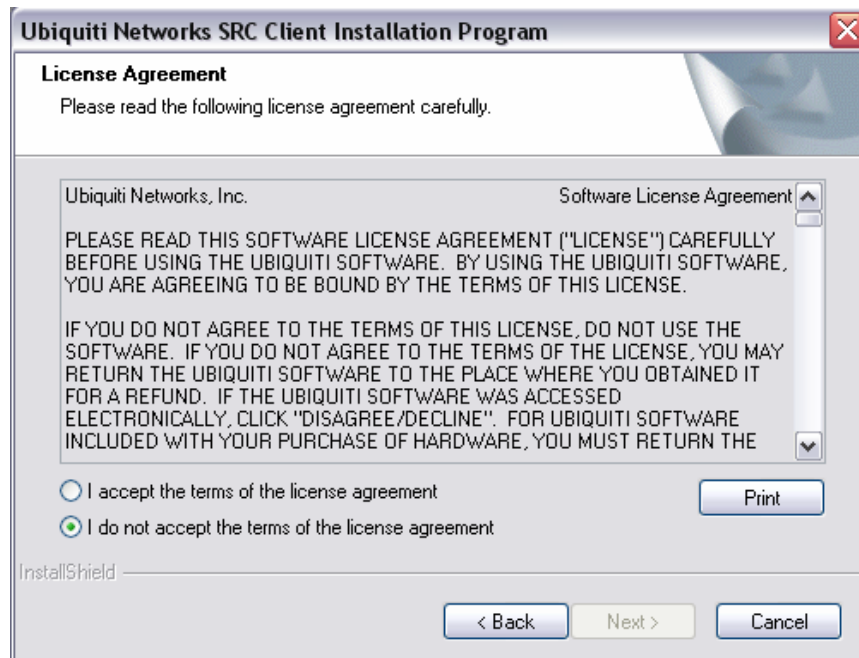


Figure 2.

The next step in the installation process is to select the type of install as seen in Figure 3. It is recommended to select the second option "Install SRC client utility and drivers".

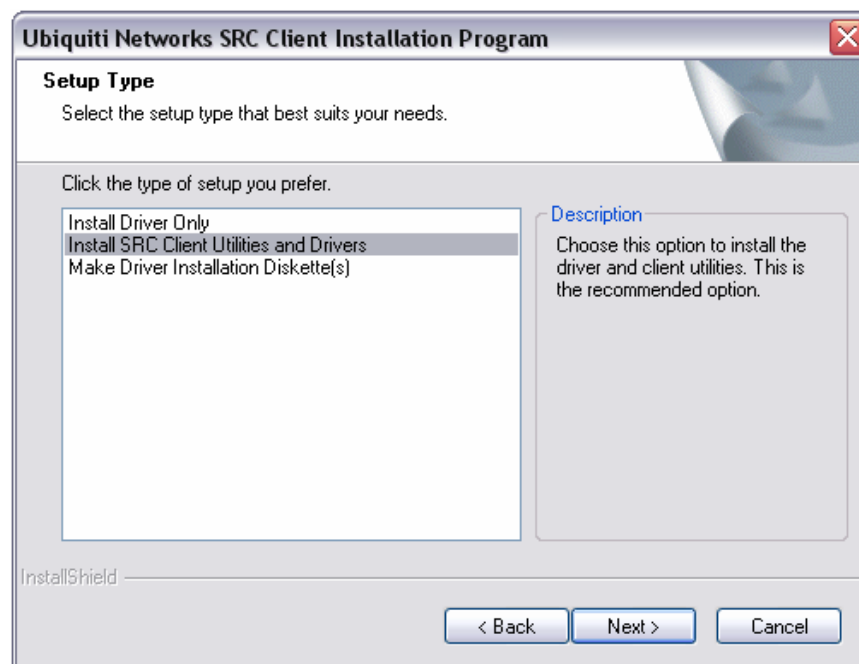


Figure 3.

On the next screen that appears you will be given the option to select a destination folder to install the Ubiquiti software. It is recommended to leave this option to the default directory. See Figure 4.

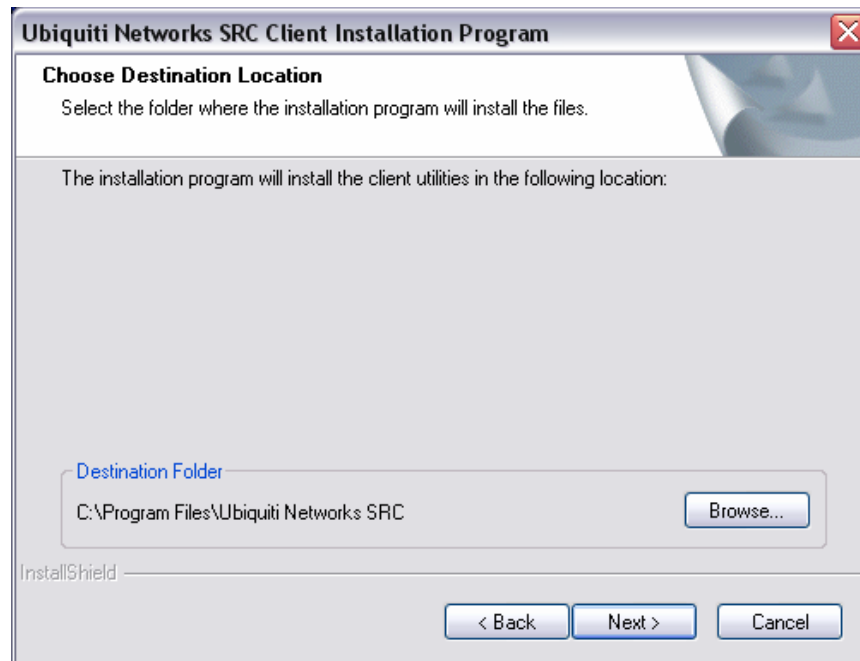


Figure 4.

You will come to the Select Program Folder option next. It is recommended to leave this to the default setting. Click next to continue. See Figure 5.

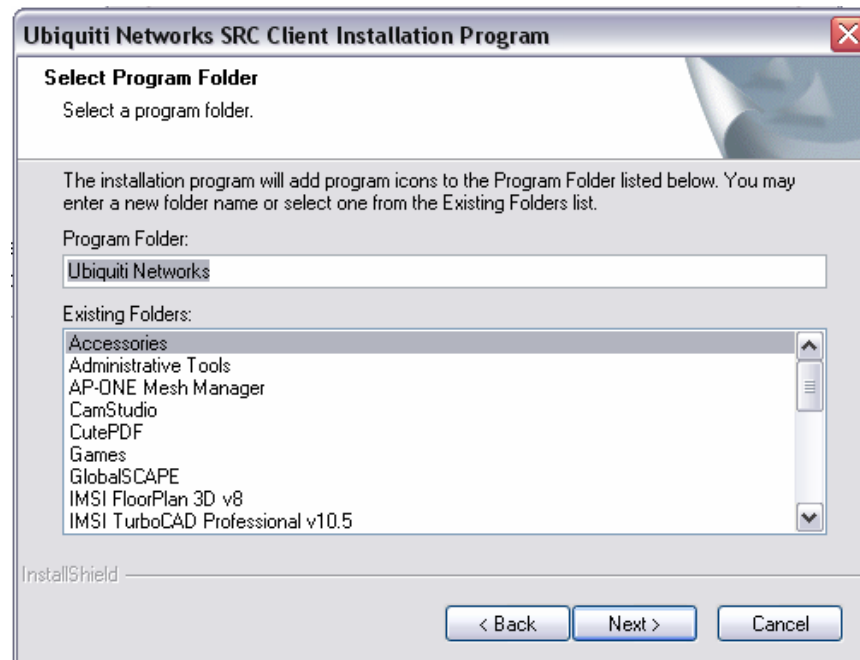


Figure 5.

Proceed to the 3rd Party disclosure page. This gives you the details if you want to use another program besides the Ubiquiti tool to control the SRC Card. Please see Figure 6.

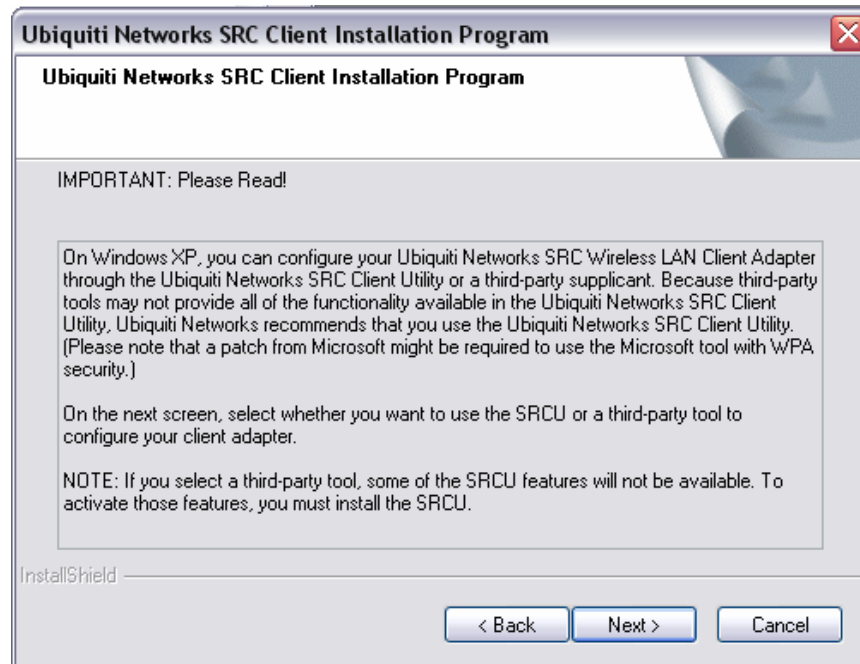


Figure 6.

After clicking next you will be given the option to select to use either the Ubiquiti software or another 3rd party supplicant. It is recommended to leave this to the default setting. See Figure 7.

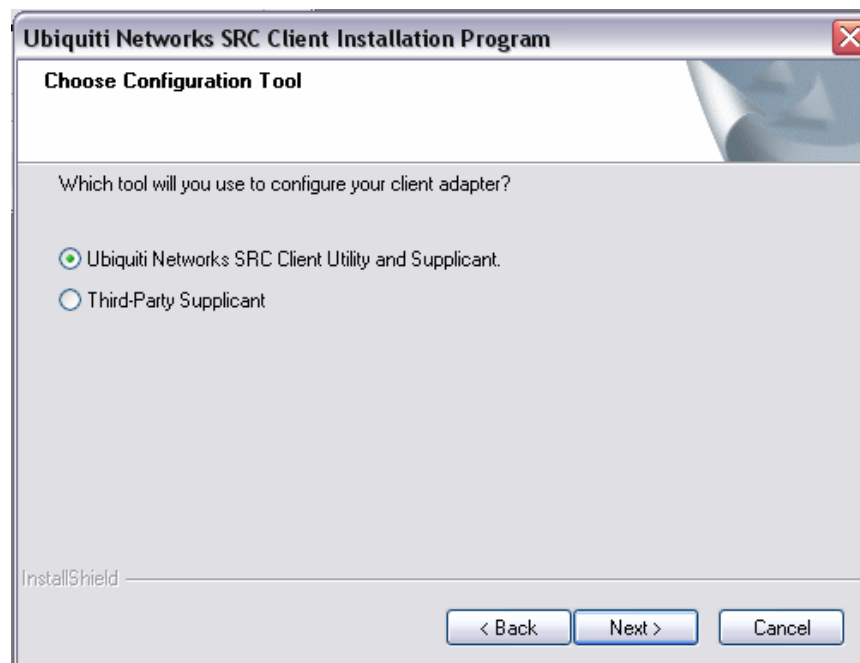


Figure 7.

On the next screen you will need to hit the “Continue Anyways” buttons twice to continue. Please see Figure 8.



Figure 8.

The installer will then install all necessary files. When it is done the installation will have been completed. Please restart your computer, and the SRC card will be ready to use.

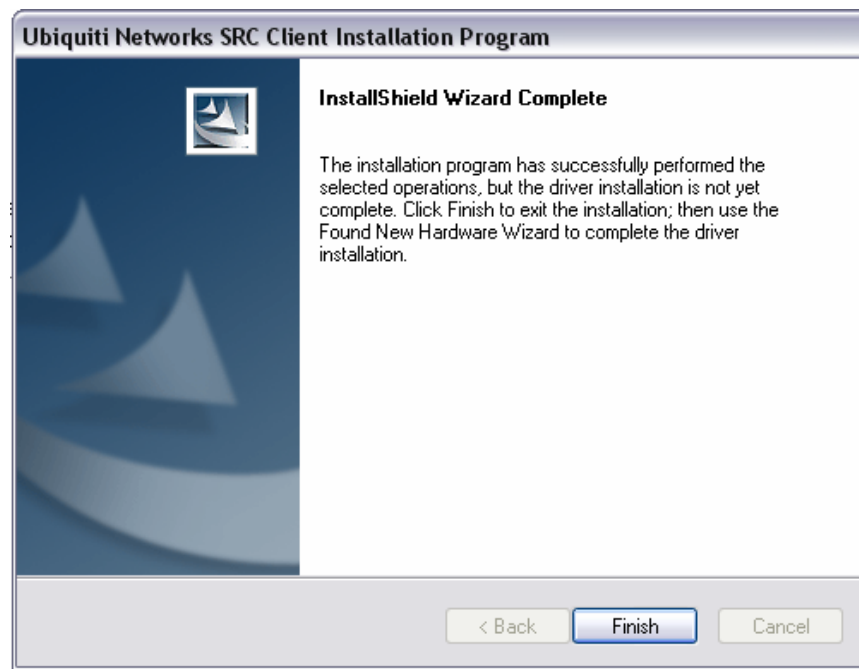


Figure 9.