



- Package Contents**
- Wireless-N PCI Adapter
  - External Antenna
  - Setup Wizard CD-ROM
  - User Guide on CD-ROM
  - Quick Installation

**2.4GHz Wireless-N PCI Adapter**

Quick Installation

Model No. **WMP300N**

CISCO SYSTEMS

# 1 Begin Installation

**IMPORTANT:** Do not install the Adapter in your PC until you are instructed to do so in Step 2; otherwise, the Adapter will not install correctly.

The Adapter is installed and set up using the Setup Wizard that comes on the enclosed CD.

- A** Insert the **Setup Wizard CD-ROM** into your CD-ROM drive. The Setup Wizard should run automatically, and the *Welcome* screen should appear.
- B** To install the Adapter, click **Click Here to Start** on the *Welcome* screen.
- C** After reading the License Agreement, click **Next** to continue the installation.
- D** Windows will begin copying the files onto your PC.
- E** The Setup Wizard will now prompt you to install the Adapter into your PC.

Proceed to Step 2.

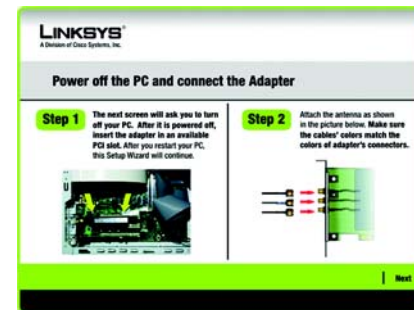


# 2 Install the Adapter

Go to the section for your Windows operating system.

## Windows XP

- A** If the *Software Installation* screen appears, click **Continue Anyway**.
- B** Click **Next** and power off your PC. After installing the Adapter and restarting your PC, the Setup Wizard will continue.
- C** Open your PC case and locate an available PCI slot on the motherboard.
- D** Slide the Adapter into the PCI slot. Make sure that all of its pins are touching the slot's contacts. Secure its fastening tab to your PC's chassis with a mounting screw. Then close your PC.
- E** Connect the antenna stand's cables to the PCI card of the Adapter. Plug the cable with the blue connector into the blue CENTER ANT port. Then attach the remaining cables to the other ports.
- F** Power on your desktop PC.

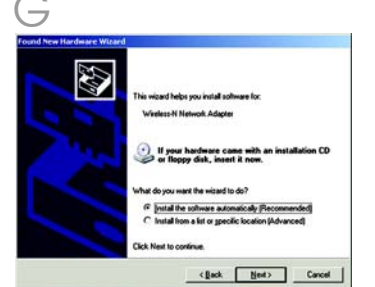


- G** If you have Windows XP with Service Pack 2, the *Welcome to the Found New Hardware Wizard* screen will appear. Click **Next**.

- H** On the *Found New Hardware Wizard* screen, make sure that *Install the software automatically (Recommended)* is selected, then click **Next**.

- I** On the *Hardware Installation* screen, click **Continue Anyway**.

- J** When the wizard has finished installing the software, click **Finish**.
- Proceed to Step 3.



J

## Windows 2000

**A** On the *Digital Signature Not Found* screen, click **Yes**.

**B** Click **Next** and power off your PC. After installing the Adapter and restarting your PC, the Setup Wizard will continue.

**C** Open your PC case and locate an available PCI slot on the motherboard.

**D** Slide the Adapter into the PCI slot. Make sure that all of its pins are touching the slot's contacts. Secure its fastening tab to your PC's chassis with a mounting screw. Then close your PC.

**E** Connect the antenna stand's cables to the PCI card of the Adapter. Plug the cable with the blue connector into the blue CENTER ANT port. Then attach the remaining cables to the other ports.

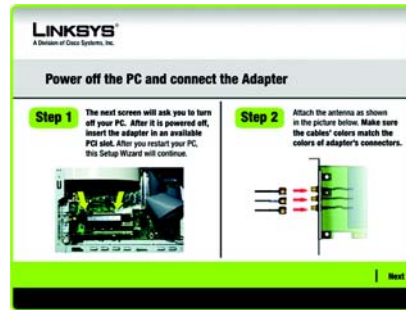
**F** Power on your desktop PC.

**G** On the *Digital Signature Not Found* screen, click **Yes**.

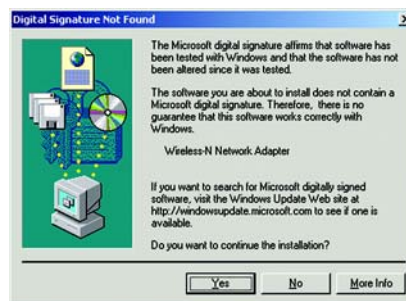
Proceed to Step 3.



A



B



G

The next screen to appear will be the *Available Wireless Networks* screen. From this screen, you can launch one of the two setup methods.

**IMPORTANT:** For quick installation, use this document only if your network appears on the *Available Wireless Networks* screen.

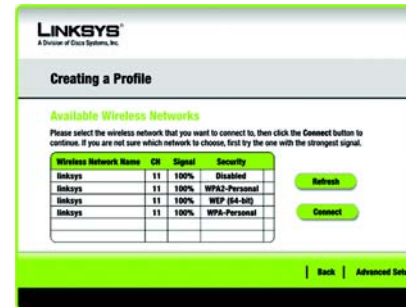
**Advanced Setup:** If you are using manual setup, click **Advanced Setup** and follow the on-screen prompts.

## Setting Up the Adapter with Available Networks

On the *Available Wireless Networks* screen, the available networks are listed in the center table by Wireless Network Name. Select the wireless network you wish to connect to and click the **Connect** button. (If you do not see your network listed, you can click the **Refresh** button.)

If the network uses wireless security, you will need to configure security on the Adapter. If not, you will be taken directly to the *Congratulations* screen, shown in Step B.

**A** If wireless security is enabled on this network, you will see one of these wireless security screens.



## Available Wireless Networks

### WEP Key Needed for Connection

Select **64-bit** or **128-bit**. Then, enter the passphrase or WEP key of your network.

Passphrase - The passphrase is case-sensitive and should not be longer than 16 alphanumeric characters.

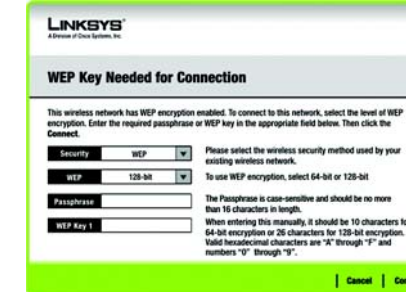
WEP Key - For 64-bit encryption, enter exactly 10 hexadecimal characters. For 128-bit encryption, enter exactly 26 hexadecimal characters. Valid hexadecimal characters are "0" to "9" and "A" to "F".

Click **Connect** and go to Step B.

### PSK Needed for Connection

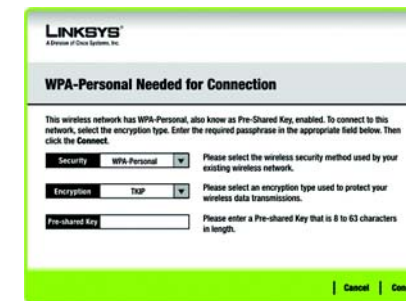
Select **TKIP** or **AES** for the Encryption type, and then enter the Pre-shared Key of your network. It should have 8-63 characters.

Click **Connect** and go to Step B.



## WEP Key

**NOTE:** Your passphrase must match the passphrase of your other wireless network devices and is compatible with Linksys wireless products only. (Non-Linksys wireless products require a WEP key to be entered.)



## PSK

### PSK2 Needed for Connection

Enter the Pre-shared Key of your network. It should have 8-63 characters.

Click **Connect** and go to Step B.

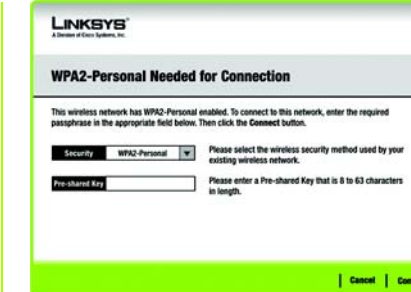
**B** After the Adapter is configured, the *Congratulations* screen will appear. Click **Finish** to complete the setup.

**Congratulations! Setup is complete.**

**NOTE:** After the Adapter is installed, the *Wireless Network Monitor* icon will appear in your PC's system tray. Double-click the icon if you want to open the Monitor to find available wireless networks or change the Adapter's configuration.



Wireless Network Monitor icon



## PSK2



B

## LINKSYS®

A Division of Cisco Systems, Inc.

For additional information or troubleshooting help, refer to the User Guide on the Setup CD-ROM. You can also call or email for further support.

### 24-hour Technical Support

800-859-2379  
(toll-free from US or Canada)

**E-mail Support**  
support@linksys.com

**Website**  
http://www.linksys.com or  
http://support.linksys.com

**RMA (Return Merchandise Authorization)**  
http://www.linksys.com/support

**FTP Site**  
ftp://ftp.linksys.com

**Sales Information**  
800-546-5797 (800-LINKSYS)

Linksys is a registered trademark or trademark of Cisco Systems, Inc. and/or its affiliates in the U.S. and certain other countries. Copyright © 2006 Cisco Systems, Inc. All rights reserved.